



Taxi

Taxi Area	free
Landing Light	on
Power	ca. 1000 – 1200 RPM (Bremsen schonen)
Parking brake	released

Taxi Check

Brakes	checked (kurz nach dem Anrollen)
Steering	checked
Attitude Indicator	erected & stable
HSI, Compass	indicating left/right turn (increasing/decreasing)
Turn Coordinator	indicating left/right turn
Slip Indicator	left/right deflection

Stop

Power	1000 - 1200 RPM
Parking Brake	set
Landing Light	off

Line up

Approach sector, runway	free
Lights	on
Wind	checked
Runway	identified (richtige Piste ?)
Runway- / Gyro-heading	compared
Transponder	set 7000 or according ATC

Start

Brakes / Full power	RPM checked
Brakes release	Bremsen ganz los lassen !
Speed rising	rising, 30, 40 Kts, ... checked (ready sein für einen Startabbruch)

Climb out

Attitude	positive ROC, speed > 65 Kts
Gear	up
Flaps	up (speed > 78 Kts, slowly retract)

When reaching safety altitude (300 ft AAL)

Speed	accelerate to v_y (90 Kts)
Power	25" / 2500 RPM
Fuel pump	off
Landing light	as desired

Cruise climb above 2000 ft (AGL)

Speed	104 Kts
-------	---------



Climb



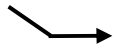
Mixer	rich / unter 75% Leistung (~ > 5000 ft) 125° F rich of peak
Propeller	2500
Throttle	25"
Attitude	gleichzeitig mit dem Power setzen die Steigfluglage einnehmen
Trim	

Descend



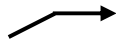
Mixer	je nach Flughöhe, den Mixer kontinuierlich reicher einstellen
Attitude	Sinkfluglage (nose down) einnehmen
Throttle	ev. Leistung reduzieren
Propeller	ev. Leistung reduzieren
Trim	

Level Off



Level off einleiten	Start ca. 10 % ROD vor der Höhe (also 50ft bei 500ft/min)
Propeller	
Throttle	
Attitude	
Trim	
Mixer	unter 75% Leistung (~ > 5000 ft)= lean assist on MFD

Level Off



Level off einleiten	Start 10 % ROC vor der Höhe (also 50ft bei 500ft/min)
Attitude	
Throttle	Reduktion auf 65 % Reisleistung
Propeller	Reduktion auf 65% Reiseleistung
Trim	
Mixer	unter 75% Leistung (~ > 5000 ft)= lean assist on MFD

Go around

Propeller	high RPM
Throttle	full power
Attitude	Rotate to positive ROC (when speed established > 65 Kts)
Flaps	up (slowly retract, if speed is > Vx 78 Kts)
Gear	up

Touch and Go

Propeller	high RPM
Throttle	full power
Attitude	rotate and accelerate to Vx (78 Kts)
Flaps	up (slowly retract)
Gear	up

(keine Manipulation an den Klappen während des Rollens)